

Lesson 10  
SAYC – Continued. Trump bidding  
(Student pages)

1. How many points are required for a Major suit opening?
2. How many points are required for a Minor suit opening?
3. What is the required Major suit length for an opening bid?
4. What is the required Diamond suit length for an opening bid?
5. What is the required Club suit length for an opening bid?
6. If you have two suits with the same length, which one should be bid first?
7. How many HCP in the following hand?

♣ K54                      ♦ 6                      ♥ AKJ10                      ♠ J9864

8. How many total points in the following hand?

♣ K54                      ♦ 6                      ♥ AKJ10                      ♠ J9864

9. Now let's assume partner has bid hearts. Since your hand demonstrates a great match in hearts, your partnership has in fact agreed on hearts as the Trump suit. How many total points in the following hand now (after partner's heart bid)?

♣ K54                      ♦ 6                      ♥ AKJ10                      ♠ J9864



**SAYC – Major suit opening and response**

# MAJOR OPENINGS

## Five-Card Major

**Double Raise = Limit (Invitational with 10-12 points)**

A one heart or one spade opening bid shows a five-card or longer suit and usually 12 or more HCP. Occasionally you may have two suits of equal length in which case always bid the higher-ranking suit first. If you happen to have a six-card suit and a five-card suit, bid the six-card suit first even if it is a minor suit. Examples:

♠ J x x  
♥ A Q x x x  
♦ K J x x  
♣ K  
Open with 1♥

♠ J x x x x  
♥ A K J x x  
♦  
♣ Q J x  
Open with 1♠

### RESPONSES AND LATER BIDDING AFTER 1♥ OR 1♠ OPENING

While the opening bid of one of a suit is never forcing, if the next player passes, you should try to make some response with as little as 5 or 6 points. Responses:

Over a 1♥ bid: (**remember** – the first priority is to support partner’s suit)

- Pass = 5 points or less.
- 1♠ = At least four spades, 6 or more points. Typically denies 3 hearts.
- 1NT = 6-9 points, denies four spades or three hearts. NOT forcing.
- 2♣, 2♦ = 10 points or more, at least four of the suit.
- 2♥ = Three-card or longer heart support; 6-9 dummy points.
- 2NT = Currently 10-12 HCP with balanced hand. In the advanced course (Jacoby 2NT).
- 3♥ = Limit raise (10-12 dummy points with three or more hearts).
- 3NT = 13-15 HCP, balanced hand with two-card heart support.
- 4♥ = Usually 4+ hearts, a singleton or void, and no more than 10 HCP.

Example Responses:

♠ x x x x	♠ x x x	♠ K Q x	♠ x x x x	♠ K Q x	♠ Q x x
♥ x x	♥ x	♥ x x	♥ K J x x	♥ A x x x	♥ x x x x
♦ A Q 10 x x	♦ K x x x x	♦ A J 10 x x	♦ 10 x x	♦ Q 10 x x	♦ Q 10 x x
♣ 10 x	♣ K 10 x x	♣ J 10 x	♣ Q x	♣ x x	♣ x x
Bid 1♠	Bid 1NT	Bid 2♦	Bid 2♥	Bid 3♥	Pass

## OPENER'S RE-BIDS ARE NATURAL AND STANDARD

### Re-bids with a minimum hand (13-15 points):

- Re-bid of no-trump at the lowest available level.
- Raising responder's suit at the cheapest level.
- Re-bidding a new suit (but not reversing).
- Re-bidding of opener's suit at the lowest level.

### Re-bids with a medium hand (16-18) points:

- Jump raise of responder's suit or jump re-bid of opener's suit
- Reverse in a new suit

Non-reverse bid: Re-bidding a new suit, lower than the original one (13-18 points): 1♠ - 1NT - 2♦

Reverse bids: Re-bidding a higher level suit relative to the original one: 1♦ - 1NT - 2♥

With a maximum hand (19-21 or 22 points) opener must make a very strong re-bid: Jump in no trump; Double jump raise in responder's suit or double jump re-bid of opener's suit; Jump shift in a new suit.



**SAYC – Minor suit opening and response**

**MINOR OPENINGS**  
**Diamond – Minimum Length: 4**  
**Clubs – Minimum Length: 2**

**Double Raise = Limit (Invitational with 10-12 points)**  
**1NT response to 1♣ = 6-10 points**

If you do not have enough points for a no-trump opening and no five-card major suit, but you hold 12 or more HCP, you must open a minor suit. Open your longer minor but if you do not have a 4-card diamond suit, you should open 1♣.

♠ K Q x  
 ♥ A J x x  
 ♦ Q J 10  
 ♣ x x x  
 Open with 1♣

♠ J x  
 ♥ A K J  
 ♦ Q x x x  
 ♣ Q J x x  
 Open with 1♦

A 1♦ opening suggests a four-card or longer suit, since 1♣ is preferred on hands where a three-card minor suit must be opened. The exception is a hand with a 4-4-3-2 shape (distribution) -- four spades, four hearts, three diamonds, and two clubs, which should be opened 1♣.

Example:  
 ♠ A K x x  
 ♥ 10 x x x  
 ♦ Q J 10  
 ♣ K x  
 Open with 1♣

**RESPONSES TO 1♣ or 1♦ OPENING**

Responses and later bidding generally follow the ideas set down in the previous major suit section. Responder needs more trumps to raise a minor suit (4 to raise 1♦; 5 to raise 1♣, though one less trump might do in a competitive sequence). Responses of 2NT and 3NT are standard:

Over a 1♣ opening bid:

- Pass = Less than 5 points
- 1♦ = At least 4 diamond suit. No 4-card heart or spade suit.

- 1♥,1♠ = At least 4-cards. If you have both, bid the longer one. If both have 4 cards, bid 1♥
- 1NT = 6-9 points, denies a 4-card major suit. NOT forcing.
- 2♣ = 6-11 points with 5+ clubs suit.
- 2NT = 10-12 HCP
- 3♣ = 12-15 HCP with 5+ clubs suit
- 3NT = 13-15 HCP, balanced hand with opening values

There is no forcing minor-suit raise.

Example:

♠ A J x

♥ K x x

♦ Q 10 x x

♣ A x x

Bid 3NT



**SAYC – Opening 2 of a suit**

## 2-LEVEL OPENINGS

**2♣ - STRONG Forcing – 22+ HCP or 9+ Tricks**

**Conventional Response - 2♦ May be waiting lacking a good suit**

**2♦ - WEAK with 6 card Diamond suit - 5 to 11 HCP**

**Response 2NT – Forcing**

**2♥ - WEAK with 6 card Hearts suit - 5 to 11 HCP**

**Response 2NT – Forcing**

**2♠ - WEAK with 6 card Spades suit - 5 to 11 HCP**

**Response 2NT – Forcing**

Sometimes you pick up a wonderful hand that needs very little from partner to make a game, perhaps even a slam. You cannot risk opening with a mere one bid, as partner will pass with less than 6 points and you cannot afford to bid a full game because you may need partner's cooperation in selecting the best final contract. In such cases open 2♣.

### 2♣ OPENING, RESPONSES AND LATER BIDDING

A 2♣ opening shows at least 22+ points, or the playing equivalent.

Responder must keep the bidding open until game is reached. Responses:

2♦ = artificial, either negative or "waiting" to hear more from partner.

2♥, 2♠, 3♣, 3♦ = natural and game forcing with at least a five-card suit and 7 HCPs.

2NT = a balanced 8+ HCP hand.

If opener re-bids 2NT after a 2♦ response (showing 22-24 points), continuation is as after a 2NT opening:

2♣ -- 2♦ -- 2NT -- 3♣ = Stayman.

-- 3♦, 3♥ = Jacoby transfers to hearts and spades respectively.

#### Opener

♠ A x x

♥ K 9

♦ A K J x x

♣ A K 10

Bid 2♣

#### Responder

♠ x x

♥ J x x x

♦ x x x

♣ Q x x x

Bid 2♦

## BIDDING AND RESPONDING TO WEAK TWO-BID OF 2♦, 2♥, 2♠

Weak two-bids show a six-card suit of reasonable quality and 5-11 HCP. On rare occasions it may be a very good five-card suit. It is possible to open a weak two with a poor seven-card suit (not good enough to open with at the three level).

### Responses:

2NT response is forcing, showing game interest. Opener re-bids his suit with a minimum (5-8 points). With a maximum (9-11 points) opener bids another suit to show a "feature" (Ace or King in that suit); lacking a feature he raises to 3NT and lets responder place the contract.

Any raise of opener's suit is to play and could be preemptive. A 3NT response is also to play.

A new suit response is forcing one round and shows at least a five-card suit. Opener should raise a major suit response with a three-card fit, or perhaps with a doubleton honor.

With no fit for responder's suit, opener re-bids:

With a minimum (5-8 points), he re-bids his suit at the cheapest level.

With a maximum (9-11 points) he names a new suit or bids no trump.

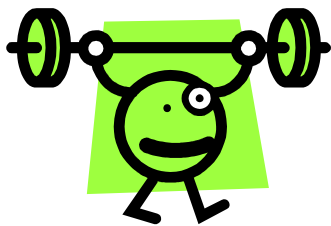
Example: Bid 2♠

♠ K Q J x x x

♥ x x

♦ K x

♣ x x x



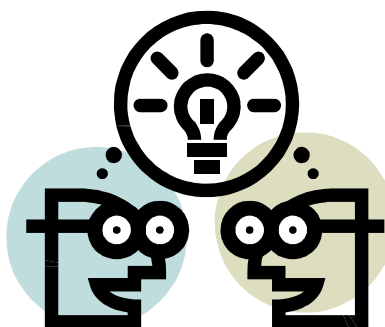
**OPENING BIDS** - You are the dealer – what is your opening bid with the following hands?

Hand				Select your bid					
♣ K54	♦ 6	♥ AKJ10	♠ J9864	Pass	1♥	1♠		Other	
♣ AKJ3	♦ KJ76	♥ KQ10	♠ J7	Pass	1♣	1♦	1♥	1NT	Other
♣ Q74	♦ AQ10	♥ QJ42	♠ K75	Pass	1♣	1♦	1♥	1NT	Other
♣ K54	♦ AQ	♥ Q1084	♠ J986	Pass	1♣	1♥	1♠	1NT	Other
♣ AKQ	♦ 6	♥ AKJ106	♠ KQJ4	Pass	1♥	1♠	2♣	2♥	Other
♣ AK2	♦ QJ3	♥ AK106	♠ K84	Pass	1♣	1♥	1NT	2NT	Other
♣ AQJ104	♦ 63	♥ KJ986	♠ 5	Pass	1♣	1♥	1NT	2♣	Other
♣ AKQ	♦ 6	♥ AKJ106	♠ KQJ4	Pass	1♣	1♥	1♠	2♣	Other
♣ 732	♦ QJ10986	♥ KJ10	♠ 4	Pass	1♣	1♦	2♣	2♦	Other
♣ 73	♦ QJ104	♥ AKJ973	♠ 4	Pass	1♦	1♥	2♦	2♥	Other
♣ 32	♦ K74	♥ AK106	♠ KJ64	Pass	1♣	1♥	1♠	1NT	Other



**RESPONSE BIDS** – Look at the bidding sequence and your hand. What is your bid? What will be your next bid?

Bidding Sequence	Your hand					Your bid
1♣ - Pass	♣ J76	♦ 9	♥ K632	♠ AQ987		_____
1♣ - Pass	♣ 10	♦ J8632	♥ 742	♠ AQ98		_____
1♣ - Pass	♣ J8632	♦ 10	♥ AQ98	♠ 742		_____
1♦ - Pass	♣ 972	♦ A2	♥ AKQ8	♠ K642		_____
1♦ - Pass	♣ J876	♦ 832	♥ 7	♠ Q10832		_____
1♥ - Pass	♣ Q76	♦ 92	♥ Q752	♠ KJ65		_____
1♥ - Pass	♣ 1084	♦ AKJ87	♥ K765	♠ 84		_____
1♠ - Pass	♣ 10842	♦ AJ87	♥ K765	♠ 8		_____
1♠ - Pass	♣ KJ102	♦ QJ94	♥ AJ6	♠ J7		_____
1NT – Pass	♣ AQJ54	♦ K8	♥ 1097	♠ 847		_____
1NT – Pass	♣ AQJ54	♦ K8	♥ A97	♠ 847		_____



RE-BIDS – Look at the bidding sequence and your hand. What is your next bid?

Bidding Sequence	Your hand					Your bid
1♠ – P – 1NT – P	♣ K54	♦ 6	♥ AKJ10	♠ J9864		_____
1♦ – P – 1♠ – P	♣ AKJ3	♦ KJ76	♥ KQ10	♠ J7		_____
1♣ – P – 1♥ – P	♣ Q74	♦ AQ10	♥ QJ42	♠ K75		_____
1NT – P – 2♦ – P	♣ K54	♦ AQ	♥ Q1084	♠ KQ86		_____
2♣ – P – 2♦ – P	♣ AKQ	♦ 6	♥ AKJ106	♠ KQJ4		_____
2NT – P – 3♥ – P	♣ AK2	♦ QJ32	♥ AK106	♠ K8		_____
1♥ – P – 3♥ – P	♣ AQJ104	♦ 63	♥ KJ986	♠ 5		_____
2♦ – P – 2NT – P	♣ 732	♦ QJ10986	♥ KJ10	♠ 4		_____
2♥ – P – 4♥ – P	♣ 73	♦ QJ104	♥ AKJ973	♠ 4		_____
1♣ – P – 1♥ – P	♣ 32	♦ K74	♥ AK106	♠ KJ64		_____



